



**OUR GOAL:**

**TO DESIGN & BUILD THE PERFECT  
CRUSHING & SCREENING SYSTEM**

**THE RESULT:**

- AFFORDABLE
- EASY TO TRANSPORT
- LOW FEED HEIGHT
- HUGE FEED OPENING (~20" x ~36")
- JAW OR IMPACTOR (SWAP KIT)!
- UP TO FOUR (4) SCREENED PRODUCTS AT ONE TIME
- SELF-CLEANING, PERMANENT MAGNET
- REMOTE CONTROL
- DUST SUPPRESSION
- ASPHALT, CONCRETE (W/ or W/OUT WIRE & REBAR), BRICK, BLOCK, ROCK, SAND, & MUCH MORE.



**THERE'S NOTHING LIKE IT.**



The REBEL CRUSHER® can tackle nearly ANY application, small, medium & large! It has the ability to pre-screen, crush & separate crushed material into three(3) separate stock piles while removing rebar, wire & steel at the SAME TIME! The Rebel Crusher® has Variable speed, low feed height, & HEAVY DUTY FEEDER. Our Heavy Duty feeder features “mine duty” impact idlers with 4140 over-sized steel shafts specifically designed to handle being continuously fed large chunks of material. When dumping, our feeder absorbs the shock load which produces very little dust & reduces noise. You can feed the REBEL CRUSHER® with just about any machine ranging from skid steers to excavators to front end loaders reducing your investment in “yellow iron”.



A high frequency pre-screen filters out the material that you may not want to mix in with the finished product. The pre-screen has adjustable throw & action, & removable deck allowing operators to change the size of the pre-screen mesh. Operators can also install a “blank off” plate. The Rebel Crusher® has a HUGE Approx. 20” x 36” JAW CRUSHER driven by hydraulic motor and belt drives. OR 29” x 33” IMPACT CRUSHER that bolts in place of JAW!!! The crusher can operate forward or backward by simply flipping a switch on the remote control! The machine features a “simple adjustment” with traditional shims that are easy to install. The Rebel Crusher's® main wear parts are the same part number & can be swapped or flipped to maximize wear part life.

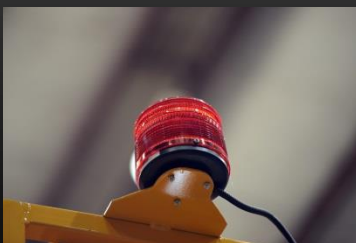


The four main bearings are oversized & fitted with remote, easy access grease fittings. The high frequency double deck sizing screen filters out & sizes all of the crushed products. There are a wide range of mesh sizes available. The screen mesh is wedged in & can be added or removed with ease. The screen can also be removed completely when only one product is desired. There are three(3) removable & folding side product conveyors which can be easily folded in or out. They feature adjustable skirt board rubber to ensure all material is stock piled with minimal spillage. In addition, all conveyor belts are pre-spliced & cut to the exact size required.



**TOP TO BOTTOM, THE PERFECT COMBINATION OF POWER,  
CAPABILITY, MOBILITY, & CRUSHABILITY!**

# BURNS LESS FUEL THAN ANY OTHER CRUSHER/SCREENER



**LOW FUEL SHUTOFF FEATURE:** A FLASHING RED LIGHT ALERT USERS THAT THE MACHINE IS LOW ON FUEL. IF FUEL IS NOT ADDED SOON, THE MACHINE WILL SHUT OFF AUTOMATICALLY BEFORE RUNNING OUT OF FUEL.



**ROBUST POWER SOURCE!** THE REBEL® FEATURES A 240 HP DIESEL (WATER COOLED) ENGINE THAT IS NOT ONLY FUEL EFFICIENT, BUT ALSO HAS PLENTY OF POWER!



**OPERATE ALL FEATURES OF THE REBEL CRUSHER®, INCLUDING VARIABLE SPEED, FROM A DISTANCE.**



**STAY COOL!** HD SEPARATE HYDRAULIC OIL COOLER



**OPTIONAL EQUIPMENT:** THREE (3) 40' RADIAL STACKING CONVEYORS



**OPTIONAL EQUIPMENT:** CLOSED-CIRCUIT CONVEYOR FOR JAW OR IMPACT!

## REBEL® PRODUCTION\*

### CLOSED SIDE SETTING

1"  
1-1/2"  
2"  
2-1/2"  
3"  
3-1/2"  
4"  
4-1/2"

### REBEL TPH

UP TO 40  
UP TO 50  
UP TO 65  
UP TO 80  
UP TO 95  
UP TO 110  
UP TO 125  
UP TO 140

## THE R.R. DIFFERENCE

- **VALUE** OUR PRICES ARE UNBEATABLE
- **SAVINGS BUY FACTORY DIRECT**
- **EXPERTISE** WE INVENT, MANUFACTURE & SELL WORLDWIDE
- **VARIETY** FROM ATTACHMENTS TO COMPLETE CRUSHING PLANTS, WE OFFER THE LARGEST RANGE OF PRODUCTS TO MATCH ANY BUDGET

\*The above figures are approximate & based on average feed material weighing approximately 100 lbs./cubic ft. crushed (1602 kg/cubic meter) of a size that will readily enter the crushing chamber without bridging. Production rates may vary considerably based on numerous factors including but not limited to the following: input size, % of content of wire, steel, fiber or re-bar, dirt or clay content, closed side discharge setting, moisture content, type of material, hardness of material, abrasiveness of material, weight of material, gradation of input material, etc. Production figures are based on the overall output of the machine including all conveyors & magnet discharge with the optional screening system removed. In other words, production figures are based on all material that enters the hopper/feeder. Please use production figures as "ballpark estimates" only. Production can be witnessed on video & during live demonstrations.

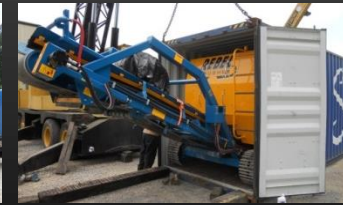
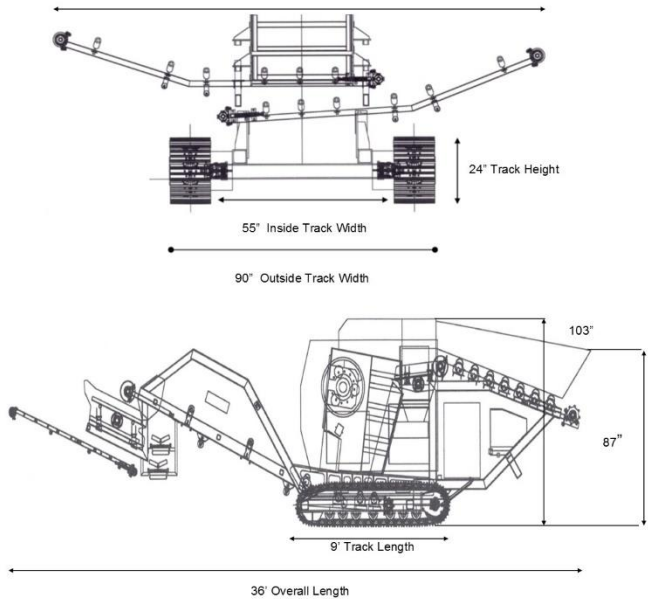


## REBEL CRUSHER® SHIPPING DIMENSIONS

### SHIPPING DIMENSIONS

With Conveyors Folded up, 90"

With Conveyors Down, 168"



APPROX. 36' x 8' x 8' | 19 TONS (38,000 LBS.)



R.R. EQUIPMENT COMPANY | 5550 CHARLOTTE HWY; LANCASTER, SC; 29720 | (803)416-5200, PHONE  
EMAIL: SALES@RREQUIPMENT.COM | WWW.REBELCRUSHER.COM