



REVOLUTIONARY RECYCLE AND ROCK CRUSHERS AND SCREENS

R.R. EQUIPMENT CO. MACHINE CATALOG



CRUSHERS - JAW, CONE, & IMPACTOR



SCREENERS FEEDERS WASHERS



CONVEYORS MAGNETS FABRICATION

TABLE OF CONTENTS

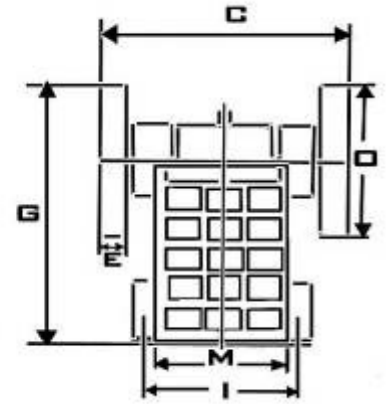
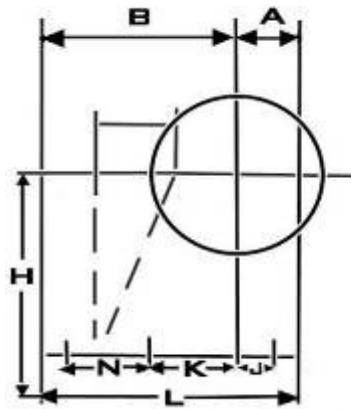
- 3. JAW CRUSHERS
- 4. IMPACT CRUSHERS
CONE CRUSHERS
- 5. INCLINE SCREENS
HORIZONTAL SCREENS
- 6. VIBRATING GRIZZLY FEEDERS
- 7. FINE MATERIAL WASHERS
- 8. COARSE MATERIAL WASHERS
LOG WASHERS
- 9. CONVEYORS
MAGNETS
CUSTOM FABRICATION



FOR MORE INFORMATION OR TO SCHEDULE A DEMO:
5550 CHARLOTTE HWY . LANCASTER, SC . 29720
(804)416-5200, PHONE . (803) 416-5202, FAX
SALES@RREQUIPMENT.COM . WWW.RREQUIPMENT.COM

AVAILABLE JAWS

MODEL	FEED OPENING	MAX FEED SIZE	DISCHARGE SETTING	REQUIRED HP	WEIGHT LBS	A	B	C	E	G	H	I	J	K	L	M	N	O
JAW0610	6" * 10"	4 7/8"	3/8" ~ 1 1/2"	25	1,790	11.0	17.7	30.6	4.5	33.5	20.7	17.5	6.5	13.2	28.7	14.2	/	25.2
JAW1624	16" * 24"	14"	1-1/2" ~ 4"	50	14,300	18.5	37.6	68.2	11.8	61.7	43.5	36.2	8.9	8.9	56.1	29.9	17.7	36.5
JAW1824	18" * 24"	16"	3-1/2" ~ 5 1/2"	55	14,520	18.5	39.6	68.2	11.8	61.7	43.5	36.2	8.9	8.9	58.1	29.9	17.7	36.5
JAW2030	20" * 30"	17"	2" ~ 4"	75	22,700	20.5	53.9	75.4	11.0	73.6	50.0	41.3	9.8	43.3	74.4	37.0	/	47.2
JAW2236	22" * 36"	17 3/4"	2" ~ 4 3/4"	100	25,000	18.4	45.3	67.8	6.3	69.6	49.0	48.6	9.8	9.3	72.4	37.8	/	41.8
JAW2436	24" * 36"	20"	3" ~ 5"	100	31,500	26.0	58.3	75.6	11.8	87.2	59.6	48.8	14.8	46.3	84.3	43.1	/	55.1
JAW3042	30" * 42"	25"	3" ~ 6"	150	63,900	23.6	74.8	97.3	11.0	110.4	77.6	61.0	15.7	37.4	98.4	51.6	27.6	65.4
JAW3242	32" * 42"	26"	4" ~ 8"	150	66,200	23.6	77.2	97.3	11.0	110.4	77.6	61.0	15.7	40.0	101.1	51.6	27.6	65.4
JAW1030	10" * 30"	8"	3/4" ~ 3"	30	10,800													
JAW1039	10" * 39"	8"	3/4" ~ 3"	40	14,300	20.1	35.6	78.4	8.7	54.3	36.6	49.6	14.2	7.7	55.7	45.3	22.0	35.4
JAW1047	10" * 47"	8"	3/4" ~ 3"	50	16,900	21.7	35.6	86.3	8.7	56.3	36.6	57.5	14.8	8.1	59.6	53.1	22.8	39.4



JAW PRODUCTION (TPH)

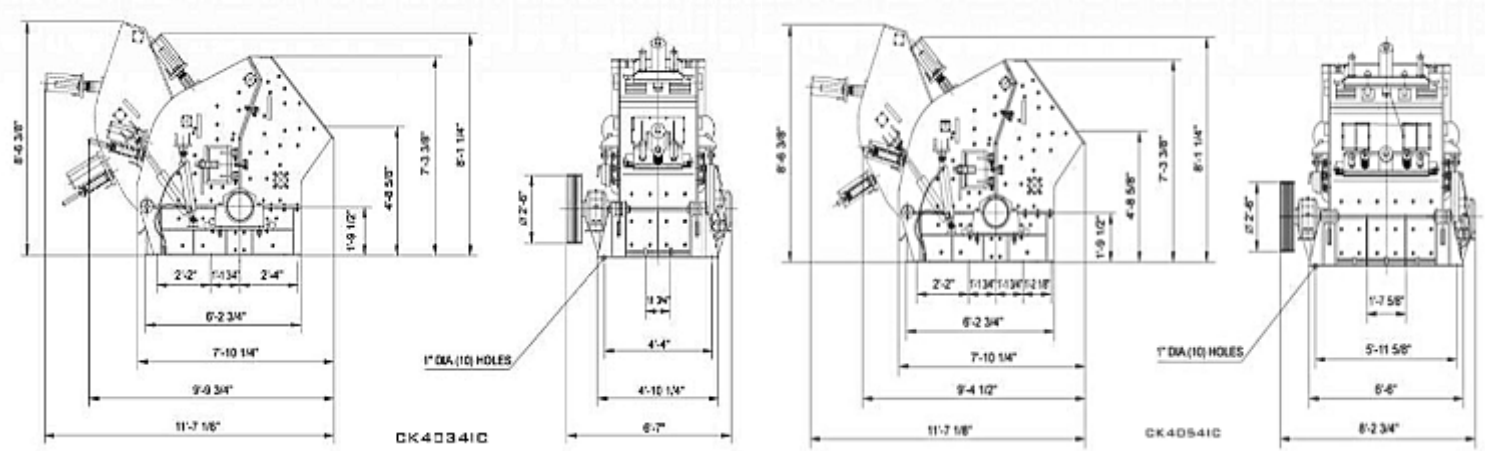
CLOSED SIDE SETTING	JAW1030	JAW1039	JAW1047	JAW1016	JAW1624	JAW1842	JAW2030	JAW2436	JAW3042	JAW3242
3/4" 19MM	10~15	15~20	30~40	5						
1" 25.4MM	15~25	20~30	40~50	15						
1-1/2" 38.1MM	25~35	30~40	50~55	15~20	20~35					
2" 50.8MM	35~40	40~50	55~65	20~25	30~50		50~65			
2-1/2" 62.5MM	40~45	50~55	65~70	25~30	35~60	60~80	65~80			
3" 76.2MM	45~50	55~60	70~80		45~70	70~90	80~95	70~90	100~125	
3-1/2" 88.9MM					55~75	80~100	95~110	80~110	125~150	
4" 101.6MM					60~80	90~110	110~120	90~120	150~175	150~175
4-1/2" 114.3MM						100~130		110~140	175~200	175~200
5" 127.0MM						110~140		120~170	200~225	200~225
6" 152.4MM						120~150			225~250	225~250
7" 177.8MM										250~275
8" 203.2MM										275~300

* All photos, specifications, and/or data is approximate and subject to change without notice. Information provided in this brochure is general and for the purpose of presenting an overview of the company, its abilities, and

AVAILABLE IMPACTORS

MODEL	FEED OPENING	RECOMMENDED FEED SIZE*	PRODUCTION RANGE (TPH)*	REQUIRED HP	ROTOR WIDTH	ROTOR DIAMETER	DISCHARGE SETTING	WEIGHT (LBS)
CK40341C	35" x 32"	24"	75~250	75 - 100	34"	40"	1 1/2" ~ 5"	21,200
CK40541C	55" x 32"	24"	100 ~ 400	200	54"	40"	1 1/2" ~ 5"	28,600

*FEED SIZE & PRODUCTION WILL VARY BASED ON NUMEROUS FACTORS.



AVAILABLE CONES

MODEL	CRUSHER SIZE	FULL LOAD COUNTER-SHAFT RPM	ELECTRIC HP	BARE WEIGHT (LBS)	BOWL, BOWL LINER WEIGHT (LBS)	HEAD, MAIN SHAFT, MANTLE & FEED PLATE ASSEMBLY WEIGHT (LBS)	COUNTERSHAFT BOX & COUNTERSHAFT ASSEMBLY WEIGHT (LBS)	ELECTRIC ASSEMBLY WEIGHT (LBS)
CKC3	3' STANDARD	580 RPM	100	22,000	4,000	3,700	2,000	1,200
CKC4	4 1/4' STANDARD	485 RPM	200	49,500	10,800	8,000	2,800	2,300

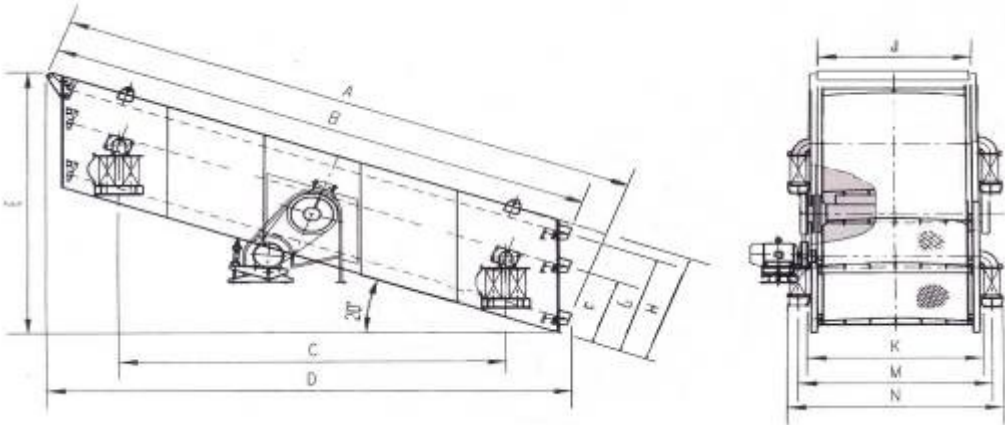


* All photos, specifications, and/or data is approximate and subject to change without notice. Information provided in this brochure is general and for the purpose of presenting an overview of the company, its abilities, and products. Use of material without the express written consent of R.R. is strictly prohibited and subject to penalties.

AVAILABLE INCLINE SCREENS

MODEL	# OF DECKS	DECK SIZE (FT)	MAX FEED (IN)	BEARING SIZE (MM)	CAPACITY (TPH)	SHAFT SPEED (RPM)	MOTOR (HP)	WEIGHT LESS MOTOR (LBS)	MEASUREMENTS IN (IN)											
									A	B	C	D	E	F	G	H	J	K	M	N
S4102	2	4x10	8	100	50-120	850	10	4,580	150 3/8	141 3/4	74	126 3/4	85 1/4	-	30 3/4	37 3/8	48	57 3/8	65 1/4	73 1/8
S4103	3	4x10	8	100	50-120	850	15	5,480	154 3/8	140 1/2	74	7/8	99 1/2	30 3/4	45 1/4	51 1/8	48	3/8	1/4	1/8
S5142	2	5x14	16	130	100-200	850	20	8,400	199 3/8	189 1/4	110 1/4	170 3/8	110 8/5	-	37 1/2	46 1/2	59	69	76 7/8	84 3/4
S5163	3	5x16	16	130	100-250	850	25	11,000	229 3/8	212 5/8	135 3/8	199 3/4	134 1/4	37	54 3/4	60 5/8	59	69	76 7/8	84 3/4
S6163	3	6x16	16	140	200-350	850	30	12,150	229 3/8	212 5/8	135 3/8	199 3/4	134 1/4	37	54 3/4	60 5/8	72	81 5/8	89 7/8	100 1/8
S6203	3	6x20	16	140	300-450	850	30	13,800	277 3/8	260 1/2	180 1/2	244 7/8	150 5/8	37	54 3/4	60 5/8	72	5/8	7/8	1/8

RUGGED HUCK BOLTED DESIGN. SCREENS COME STANDARD WITH: DRIVEN SHEAVE, MOUNTING SPRINGS, BASE PLATES, SIDE TENSIONING RAILS, AND ADJUSTABLE MOTOR BASE. OPTIONAL—MOTOR AND SCREEN CLOTH. ALSO AVAILABLE AS A WET SCREEN.

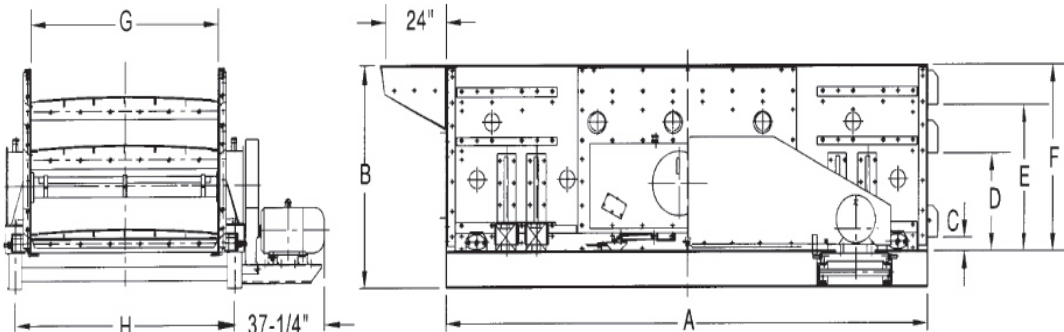


AVAILABLE HORIZONTAL SCREENS

MODEL	# OF DECKS	DECK SIZE (FT)	MAX FEED (IN)	MAX TOP DECK OPENING (IN)	BEARING SIZE (MM)	RECOMMENDED SPEED (RPM)	MOTOR (HP)	MOTOR SPEED (RPM)	BASKET WEIGHT (LBS)*	MEASUREMENTS IN (IN)							
										A	B	C	D	E	F	G	H
SH5163	3	5x16	10"	5"	160	675-875	40	1200	16,850	192 1/2	73	4 1/4	1 1/4	32 1/4	48 1/8	61 1/2	44
SH6162	2	6x16	10"	5"	160	675-875	40	1200	15,920	192 1/2	56 15/16	4 1/4	-	32 1/4	46 1/8	76 1/2	88 1/2
SH6163	3	6x16	10"	5"	160	675-875	40	1200	19,100	192 1/2	73	4 7/8	7/8	32 1/4	48 1/8	76 1/2	88 1/2
SH6202	2	6x20	10"	5"	160	675-875	40	1200	17,210	240 1/2	56 15/16	4 1/8	-	32 1/4	46 1/8	76 1/2	88 1/2
SH6203	3	6x20	10"	5"	160	675-875	40	1200	22,700	240 1/2	73 1/4	4 3/4	1 1/2	33 1/2	49 1/2	76 1/2	88 1/2

*WEIGHT INCLUDES BASE FRAME, MOTOR MOUNT, BELT GUARD.

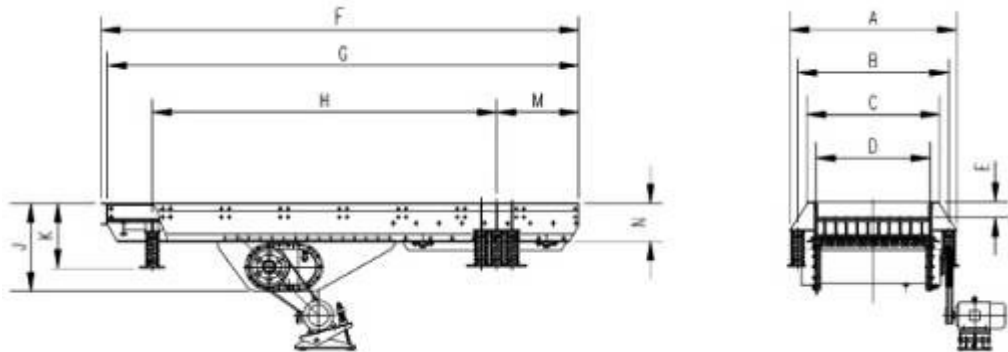
RUGGED HUCK BOLTED DESIGN. SCREENS COME STANDARD WITH: SUB-FRAMES, MOTOR MOUNTS, V-BELT DRIVE GUARDS, SPRINGS, AND LINED CROSS MEMBERS. OPTIONAL—MOTOR AND SCREEN CLOTH. ALSO AVAILABLE AS A WET SCREEN.



* All photos, specifications, and/or data is approximate and subject to change without notice. Information provided in this brochure is general and for the purpose of presenting an overview of the company, its abilities, and products. Use of material without the express written consent of R.R. is strictly prohibited and subject to penalties.

AVAILABLE VIBRATING GRIZZLY FEEDERS

ODEL	FUNNEL SIZE INCHES L x W	MAX FEED SIZE INCH- ES	BEARING SIZE MM	CAPACITY TPH	SPEED OF ECCENTRIC SHAFT	MOTOR HP	WEIGHT EXCLUDING MOTOR LBS
SKVF3812	144 x 38	20	90	100-200	500-800	15	8,750
SKVF3816	192 x 38	20	100	100-250	500-800	20	11,380
SKVF4616	192 x 46	24	100	100-400	500-800	25	12,600
SKVF4619	228 x 46	24	100	100-400	500-800	25	15,200
SKV5220	240 x 52	30	110	100-450	500-800	30	16,200
SKVF5820	240 x 58	35	130	200-500	500-800	50	19,400



VIBRATING GRIZZLY FEEDER DIMENSIONS IN INCHES

MODEL	A	B	C	D	E	F	G	H	J	K	M	N
SKVF3812	65 1/2	57 5/8	48 3/16	38	8 1/8	152 13/16	149 5/8	106 5/16	41 15/16	34 15/16	31 1/2	19 11/16
SKVF3816	65 1/2	57 5/8	48 3/16	38	8 1/8	195 3/16	191 15/16	126 1/4	42 15/16	34 15/16	44 1/8	19 11/16
SKVF4616	71 15/16	64 1/8	54 5/8	46	8 1/8	195 3/16	191 15/16	126 1/4	42 15/16	34 15/16	44 1/8	19 11/16
SKVF4619	71 15/16	64 1/8	54 5/8	46	7 7/8	236 1/4	233	170 7/8	54 3/4	43 1/8	42 7/16	31 1/2
SKV5220	78 1/8	70 1/4	61 7/16	52	8 1/16	243 1/4	240	144 7/8	43 11/16	33 3/8	73 1/16	19 11/16
SKVF5820	84 13/16	76 15/16	67 15/16	58	8 1/16	243 1/4	240	175 3/16	45 1/4	33 3/8	41 15/16	19 11/16

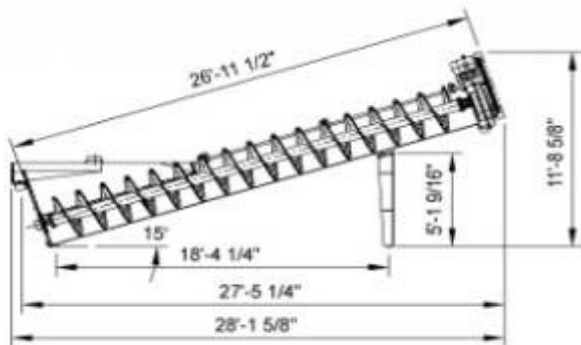


* All photos, specifications, and/or data is approximate and subject to change without notice. Information provided in this brochure is general and for the purpose of presenting an overview of the company, its abilities, and products. Use of material without the express written consent of R.R. is strictly prohibited and subject to penalties.

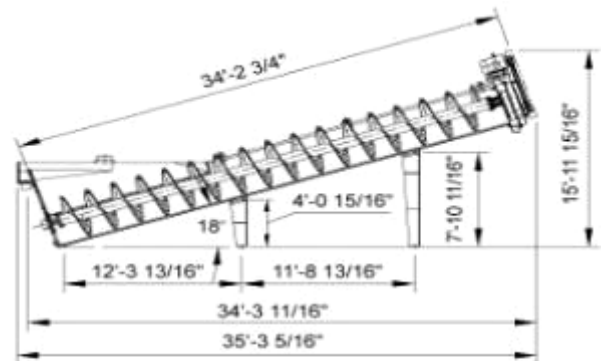
AVAILABLE FINE MATERIAL SCREW WASHERS

SCREWS ARE VERY SIMILAR TO THE EAGLE IRON WORKS DESIGN. SUPPORT LEGS INCLUDED. ADJUSTABLE MOTOR BASE. MOTOR NOT INCLUDED.

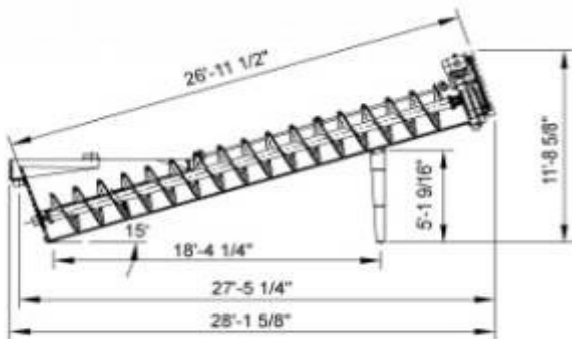
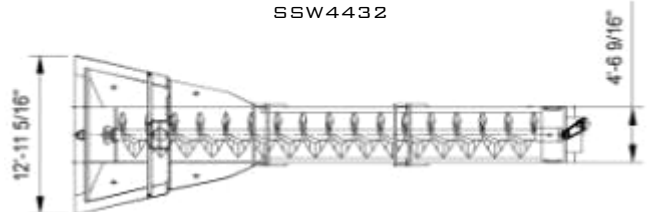
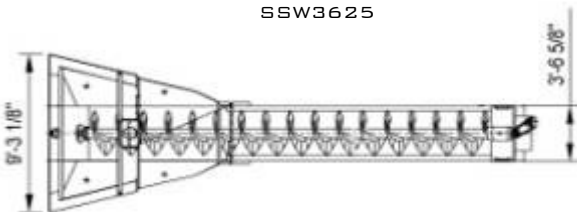
	SSW3625	TSW3625	SSW4432	TSW4432
# OF SCREW	1	2	1	2
SCREW DIAMETER (IN)	36	36	44	44
TUB LENGTH (FT)	25	25	32	32
MAX FEED SIZE (IN)	3/8	3/8	3/8	3/8
CAPACITY (TPH)	50-100	100-200	175	350
SCREW SPEED (RPM)	21	21	17	17
RECOMMENDED MOTOR (HP) *NOT INCLUDED*	15	15 X 2	25	25 X 2
WATER REQUIREMENT (GPM)	180-700	350-1250	360-1300	700-2400
WEIGHT (LBS)	14,500	25,500	23,600	40,280
DRIVE SHEAVE (IN)	6	6	7 3/4	7 3/4
DRIVEN SHEAVE (IN)	7 3/8	7 3/8	10 11/16	10 11/16



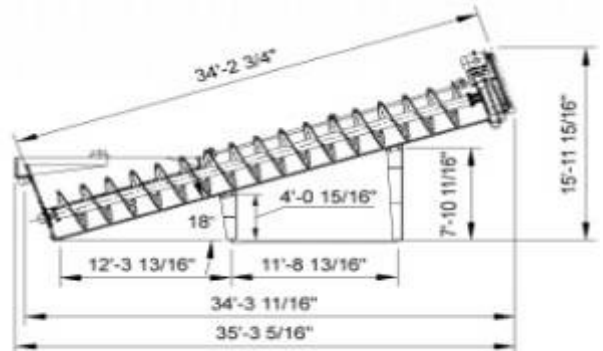
SSW3625



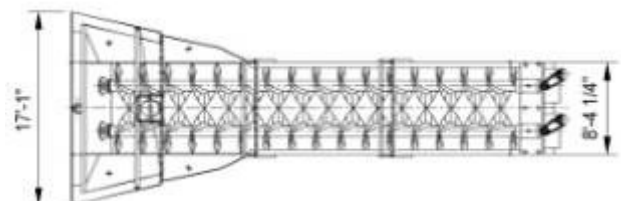
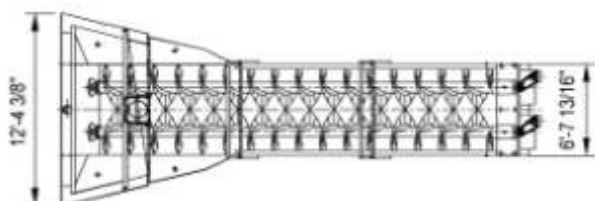
SSW4432



TSW3625



TSW4432

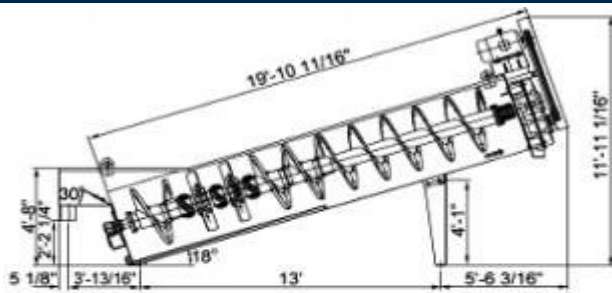


* All photos, specifications, and/or data is approximate and subject to change without notice. Information provided in this brochure is general and for the purpose of presenting an overview of the company, its abilities, and products. Use of material without the express written consent of R.R. is strictly prohibited and subject to penalties.

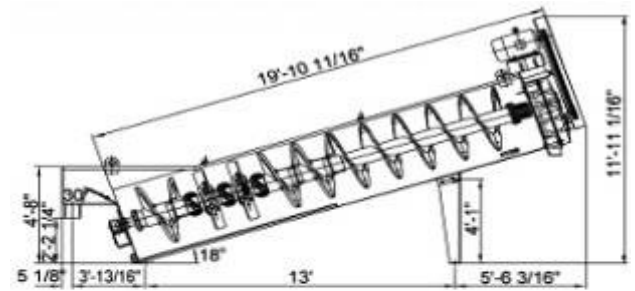
AVAILABLE COARSE MATERIAL SCREW WASHERS

	SSW3625	TSW3625
# OF SCREW	1	2
SCREW DIAMETER (IN)	36	36
TUB LENGTH (FT)	25	25
MAX FEED SIZE (IN)	3/8	3/8
CAPACITY (TPH)	50-100	100-200
SCREW SPEED (RPM)	21	21
RECOMMENDED MOTOR (HP) *NOT INCLUDED*	15	15 X 2
WATER REQUIREMENT (GPM)	180-700	350-1250
WEIGHT (LBS)	14,500	25,500
DRIVE SHEAVE (IN)	6	6
DRIVEN SHEAVE (IN)	7 3/8	7 3/8

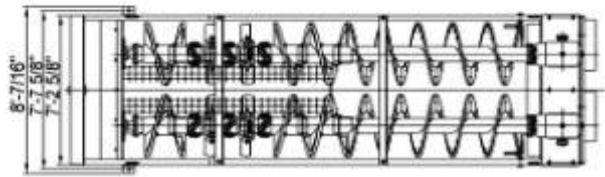
VERY SIMILAR TO THE EAGLE IRON WORKS DESIGN. SUPPORT LEGS ARE INCLUDED. REAR GREASE OUTBOARD BEARINGS. ADJUSTABLE MOTOR BASE. MACHINE IS BUILT WITH EXTRA HEAVY DUTY THICK PARTS FOR LONG LIFE.



SCW3618



TCW3618

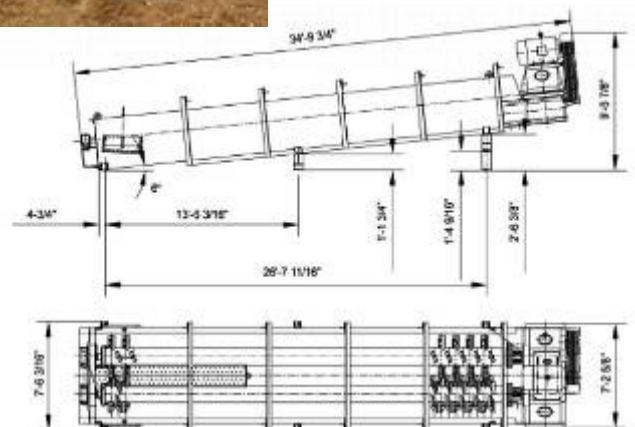


AVAILABLE LOG WASHERS

	LW3630
# OF LOGS	2
LOG DIAMETER (IN)	36
TUB LENGTH (FT)	30
MAX FEED SIZE (IN)	3
CAPACITY (TPH)	50-125
LOG SPEED (RPM)	32
RECOMMENDED MOTOR (HP)	125
WATER REQUIREMENT (GPM)	50-500
WEIGHT (LBS)	40,500
DRIVE SHEAVE (IN)	10
DRIVEN SHEAVE (IN)	19 7/8



CAST SHOE HAS CORRUGATED SURFACE TO PROMOTE SEVERE SCRUBBING ACTION. TUBULAR LOG SHAFTS. 50 - 125 TPH MAX MATERIAL SIZE 3" 150 HP MOTOR



* All photos, specifications, and/or data is approximate and subject to change without notice. Information provided in this brochure is general and for the purpose of presenting an overview of the company, its abilities, and products. Use of material without the express written consent of R.R. is strictly prohibited and subject to penalties.

AVAILABLE CONVEYORS

ALL CONVEYORS COME COMPLETE WITH ELECTRIC MOTORS, V-BELTS, GEAR REDUCERS, HEAD & TAIL PULLEYS, 2 OR 3-PLY BELTING, GUARDS, AND RECEIVING HOPPER WITH ADJUSTABLE SKIRT BOARD RUBBER. AVAILABLE WITH 230/460 VOLTS, 3PHASE, 60 HTZ CONNECTION. NUMEROUS AVAILABLE OPTIONS INCLUDING: 50 HTZ, HYDRAULIC DRIVES & CUSTOM SIZES.

8" CHANNEL FRAME CONVEYORS

MODEL	CONVEYOR DIMENSIONS	MOTOR (HP)
CNVY1820	18" x 20'	5
CNVY2440	24" x 40'	5
CNVY2450	24" x 50'	5
CNVY3080	30" x 80'	15
CNVY3625	36" x 25'	10
CNVY3660	36" x 60'	15
CNVY3670	36" x 70'	15



24" DEEP TRUSS CONVEYORS

MODEL	CONVEYOR DIMENSIONS	MOTOR (HP)
CNVY3020	30" x 20'	10
CNVY24100	24" x 100'	15

24" DEEP TRUSS PORTABLE RADIAL STACKERS

MODEL	CONVEYOR DIMENSIONS	MOTOR (HP)
PRSC2440	24" x 40'	5
PRSC2450	24" x 50'	5
PRSC3050	30" x 50'	10

36" DEEP TRUSS PORTABLE RADIAL STACKERS

MODEL	CONVEYOR DIMENSIONS	MOTOR (HP)
PRSC2440	24" x 40'	5
PRSC2450	24" x 50'	5
PRSC3050	30" x 50'	10

AVAILABLE MAGNETS

OUR MAGNETS ARE HEAVY DUTY, CROSS-BELT, SELF-CLEANING & PERMANENT. THEY ARE DESIGNED TO HANDLE RE-BAR OF VARIOUS SIZES AND GENERAL METALLIC DEBRIS FROM CONCRETE RECYCLE MATERIAL. COMPLETE WITH ELECTRIC OR HYDRAULIC MOTOR AND DRIVE TO POWER SELF-CLEANING CONVEYOR.

MODEL	MAG30	MAG36	MAG42	MAG48
SIZE (INCHES)	24"	36"	42"	48"
WEIGHT (LBS)	1,990	2,030	2,700	2,750

CUSTOM FABRICATION

R.R. CAN CUSTOM DESIGN AND MANUFACTURE ANY AND ALL TYPES OF STEEL SUPPORT STRUCTURES, HOPPERS, SKIDS, PICKING STATIONS, STANDS, AND MORE. CONTACT US FOR YOUR SPECIFIC NEEDS.



* All photos, specifications, and/or data is approximate and subject to change without notice. Information provided in this brochure is general and for the purpose of presenting an overview of the company, its abilities, and products. Use of material without the express written consent of R.R. is strictly prohibited and subject to penalties.



PROUDLY MADE IN THE U.S.A.



R.R. EQUIPMENT COMPANY HAS BEEN SERVING THE AGGREGATE INDUSTRY FOR OVER 50 YEARS. OUR VAST BACKGROUND INCLUDES OWNING AND OPERATING SEVERAL SAND AND GRAVEL OPERATIONS, QUARRIES, TRUCKING COMPANIES AND CONCRETE BUSINESSES. OUR UNIQUE ADVANTAGE IS OUR EXPERIENCE. WE UNDERSTAND MATERIAL FLOW AND INCORPORATE OUR EXPERIENCE INTO THE DESIGNS OF ALL OUR AGGREGATE SYSTEMS. OUR EXPERIENCE ENABLES US TO PROPERLY DISCUSS APPLICATION, PRODUCT SIZE, DESIRED OUTPUT SIZE, PRODUCTION, AND ESTIMATED COST PER TON. WE CAN COMBINE SOME OF THE MOST TECHNOLOGICALLY-ADVANCED AS WELL AS COST-EFFECTIVE SOLUTIONS TO ENSURE OUR CUSTOMERS' SUCCESS. WE TREAT EACH CUSTOMER AS AN INDIVIDUAL AND OFFER HONEST ANSWERS. OUR STATE OF THE ART COMPLETE FABRICATION FACILITY LOCATED JUST SOUTH OF CHARLOTTE, NORTH CAROLINA, AND CENTRALLY LOCATED ON THE EAST COAST, ENABLES US TO EFFECTIVELY AND EFFICIENTLY DESIGN AND CONSTRUCT STEEL STANDS, SKIDS, STRUCTURES, AND/OR PORTABLE CRUSHING, SCREENING, CONVEYING, AND WASHING SYSTEMS. WE STOCK AN EXTENSIVE INVENTORY OF NEW, REBUILT AND USED AGGREGATE PROCESSING EQUIPMENT. WE ACCEPT TRADE-INS AND PURCHASE ENTIRE CRUSHING AND SCREENING SYSTEMS. WE ALSO HAVE A WIDE SELECTION OF NEW AND USED PARTS AVAILABLE AT DISCOUNT PRICES WHEN SERVICE IS REQUIRED.

THE R.R. DIFFERENCE

- **VALUE** OUR PRICES ARE UNBEATABLE
- **SAVINGS** BUY FACTORY DIRECT. NO MIDDLEMAN
- **EXPERTISE** WE INVENT, MANUFACTURE & SELL WORLDWIDE
- **VARIETY** FROM ATTACHMENTS TO COMPLETE CRUSHING PLANTS WE OFFER THE LARGEST RANGE OF PRODUCTS TO MATCH ANY BUDGET

FOR MORE INFORMATION OR TO SCHEDULE A DEMO:
5550 CHARLOTTE HWY . LANCASTER, SC . 29720
(803) 416-5200, PHONE . (803) 416-5202, FAX
SALES@RREQUIPMENT.COM . WWW.RREQUIPMENT.COM