

# CRUSHKING® PORTABLE JAW PICKUP TOW



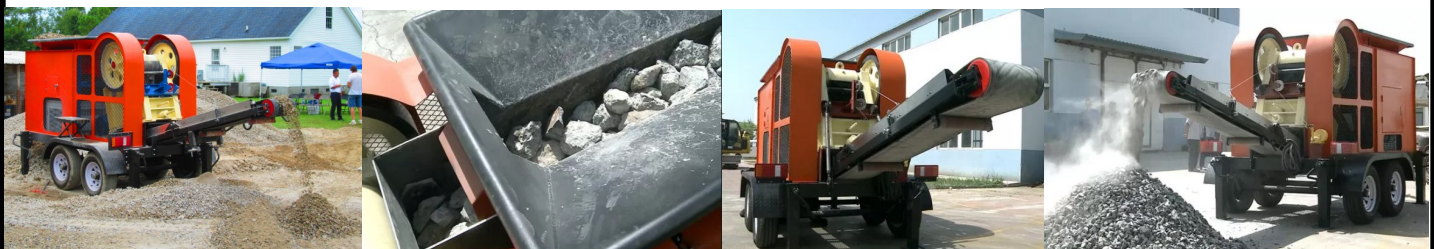
**Are you new to crushing but not ready for a larger machine yet?!**

The Crushking® **Pickup Tow Crusher** is the machine for you! An ideal unit for contractors working on residential properties or in tight commercial spaces. Move this unit easily between locations and around the job site. An electric generator is installed under the feeder. The Crushking® **Pickup Tow Crusher** weighs in at approximately 10,000 lbs!

- Tow Behind a 3/4 Ton Pickup Truck!
- ~10" x 16" Feed Opening
- Gasoline Powered
- On-Board Electric Generator
- Trailer Mounted, including Tires, Axles, Brakes, Lights, and Pintle Eye
- Adjustable Stabilizing Legs in all (4) Corners

## TECHNICAL SPECIFICATIONS

Feed Opening	Max Feed Size	Capacity (tph)	Dimensions	Weight	Generator	Conveyor Belt
9.5" x 15.5"	8"	20-30	190" x 75" x 90"	10,000 lbs	25 KW Auto Start	2' x 10'



**R.R. EQUIPMENT CO.**

REVOLUTIONARY RECYCLE—ROCK CRUSHERS & SCREENS  
WWW.RREQUIPMENT.COM



**CALL NOW!**

**803-416-5200**

**SALES@RREQUIPMENT.COM**